

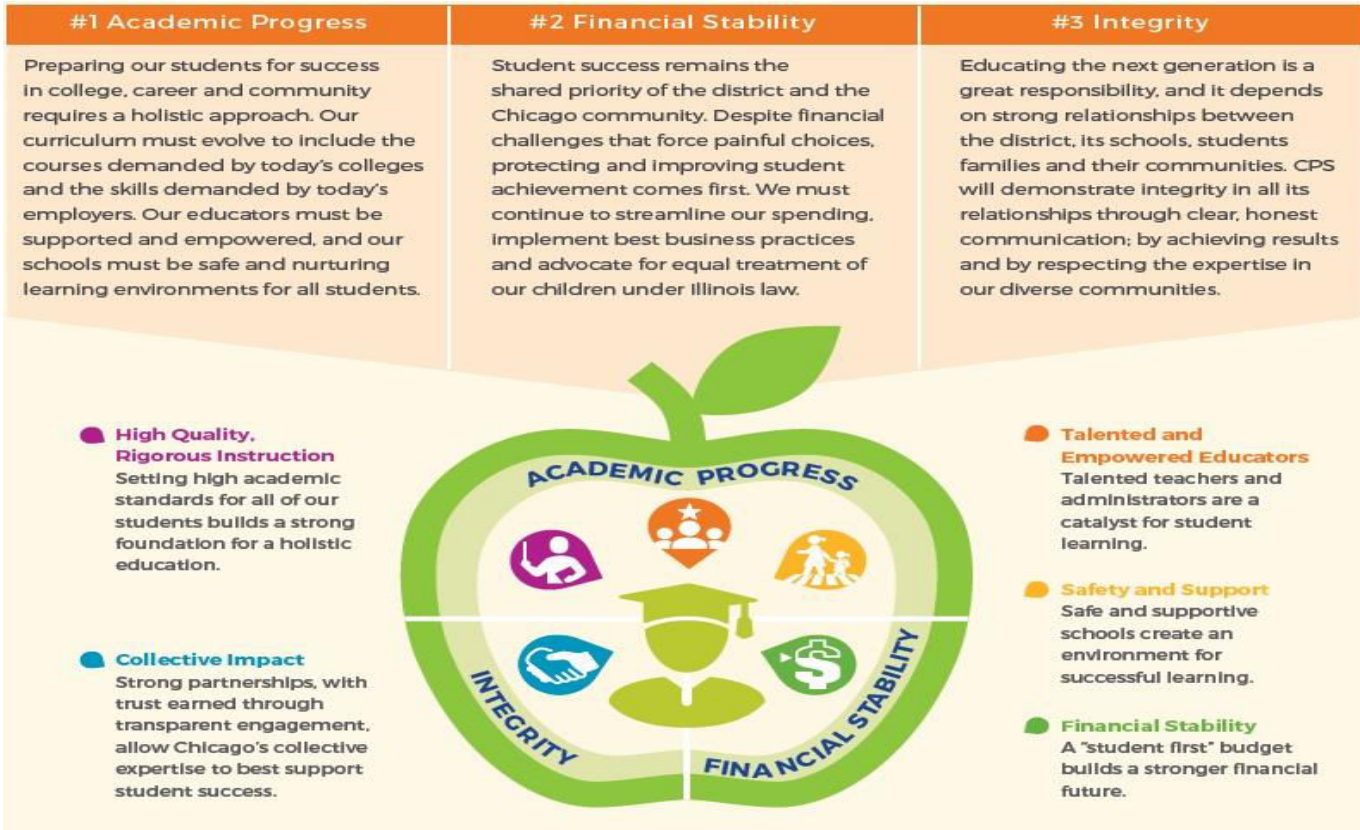


Haines School State of School

November 2018



District Vision



Haines Mission & Vision

Haines mission is to sustain a literacy, math, and science rich curriculum focused on effective, research-based instruction; we will utilize emerging technologies, innovative practices, and yield various resources to provide students with additional learning opportunities and services inside and outside of the traditional school setting

Haines vision is to provide a safe learning environment. Haines School will offer a rigorous instructional program with a focus on literacy, critical thinking and continued improvement. We will prepare students for college and career goals, while offering experiential educational experiences that are accessible to ALL students, including students whose second language is English and those with unique needs. Haines will ensure character, social and emotional development of the whole child and to foster 21st century global learning skills and to celebrate diversity.

What is the SQRP?

- The School Quality Rating Policy (SQRP) is the Board of Education's policy for evaluating school performance.
- It establishes the indicators of school performance and growth and the benchmarks against which a school's success will be evaluated on an annual basis.
- Through this policy, each school will receive a **School Quality Rating** and an **Accountability Status**.

What is the Purpose of the SQRP?

The School Quality Rating and Accountability Status serve the following purposes:

- **Communicating** to parents and community members about the academic success of individual schools and the district as a whole;
- **Recognizing** high achieving and high growth schools and identifying best practices;
- Providing a framework for **goal-setting** for schools;
- Identifying schools in need of targeted or intensive **support**; and
- **Guiding** the Board's decision-making processes around school actions and turnarounds.

How Are Ratings Assigned?

- Schools earn between 1 – 5 points for each metric.
- Points are weighted according to the tables on slide 6 and added together. The school's overall score is also between 1 – 5.
- Based on the overall score (or minimum attainment percentile – see below), the school receives a School Quality Rating and Accountability Status.

Overall Score		Minimum Attainment Percentile	School Quality Rating	Accountability Status
4.0 or more	OR	90th	Level 1+	Good Standing
Between 3.5 and 3.9		70th	Level 1	Good Standing
Between 3.0 and 3.4		50th	Level 2+	Good Standing
Between 2.0 and 2.9		40th	Level 2	Provisional Support
Less than 2.0		--	Level 3	Intensive Support

What Does the School's Status Mean



Good Standing Levels 1+ - 2+	Provisional Support Level 2	Intensive Support Level 3
<p>These schools are meeting or exceeding the minimum performance expectations for CPS schools.</p> <p>While these schools are still bound by federal and state law and CPS policies, they have some autonomy around school improvement planning and budgets. LSCs approve CIWPs in these schools.</p>	<p>These schools are in need of targeted support to keep them moving in the right direction. The CEO may require the following:</p> <ul style="list-style-type: none"> • Drafting a new CIWP • Directing the implementation of the CIWP • Providing additional training for the LSC • Mediating disputes or other obstacles to improvement <p>If the CEO determines the problems are not able to be remediated by the above methods,</p>	<p>These schools are in need of intensive support to quickly improve the quality of education for students. In addition to the types of support provided under “Provisional Support”, the following actions may be taken*:</p> <ul style="list-style-type: none"> • Replacing the principal • School turnaround • Ordering new LSC elections • Closure <p>*These actions are allowable under Illinois School Code, but</p>

What Does SQRP Measure?

ATTENDANCE

DATA QUALITY

GROWTH

SCHOOL CLIMATE

ATTAINMENT

Haines Profile

Demographics					
	African American	Hispanic	Asian	EL	DL
Count	117	9	550	201	27
Percentage	17.18%	1.32%	80.76%	29.52%	3.96%
Total Population	681				

SQRP Data					
Year	School Year	2015	2016	2017	2018
	SQRP Year	2016	2017	2018	2019
Overall	SQRP Rating	Level 1+	Level 1+	Level 1+	Level 1+
	Total Points	4.4	4.3	4.8	4.7
	Accountability Status	Good Standing	Good Standing	Good Standing	Good Standing

SQRP Over Time at Haines

		Metric	SY15	SY16	SY17	SY18	2018-2019 CIWP Goal	2019-2020 CIWP Goal	SQRP CUTOFFS				
									1pt	2pts	3pts	4pts	5pts
READING	Growth Percentile	All Students	97	83	94	83	92	90	<10	10	40	70	90
		African-American	91	70	75	70	72	70	<10	10	30	50	70
		Hispanic	<10	10	30	50	70
		English Learners	99	99	99	93	70	70	<10	10	30	50	70
		Diverse Learners	<10	10	30	50	70
	Attainment Percentile	Reading: 2nd Grade	90	67	82	80	90	90	<10	10	40	70	90
		Reading: 3rd-8th Grades	95	87	91	91	90	90	<10	10	40	70	90

SQRP Over Time at Haines

Metric		SY15	SY16	SY17	SY18	2018-2019 CIWP Goal	2019-2020 CIWP Goal	SQRP CUTOFFS					
								1pt	2pts	3pts	4pts	5pts	
MATH	Growth Percentile	All Students	96	94	95	92	92	90	<10	10	40	70	90
		African-American	56	66	66	75	70	70	<10	10	30	50	70
		Hispanic	-	-	-	-	-	-	<10	10	30	50	70
		English Learners	96	99	96	97	70	70	<10	10	30	50	70
		Diverse Learners	-	-	-	-	-	-	<10	10	30	50	70
	Attainment Percentile	Math: 2nd Grade	84	56	75	92	90	90	<10	10	40	70	90
		Math: 3rd-8th Grades	99	97	98	98	90	90	<10	10	40	70	90
ALL	NWEA Growth	Percent Making National Average Growth	68.1	68.2	73.9	73.5	70	70	<25	25	35	45	55

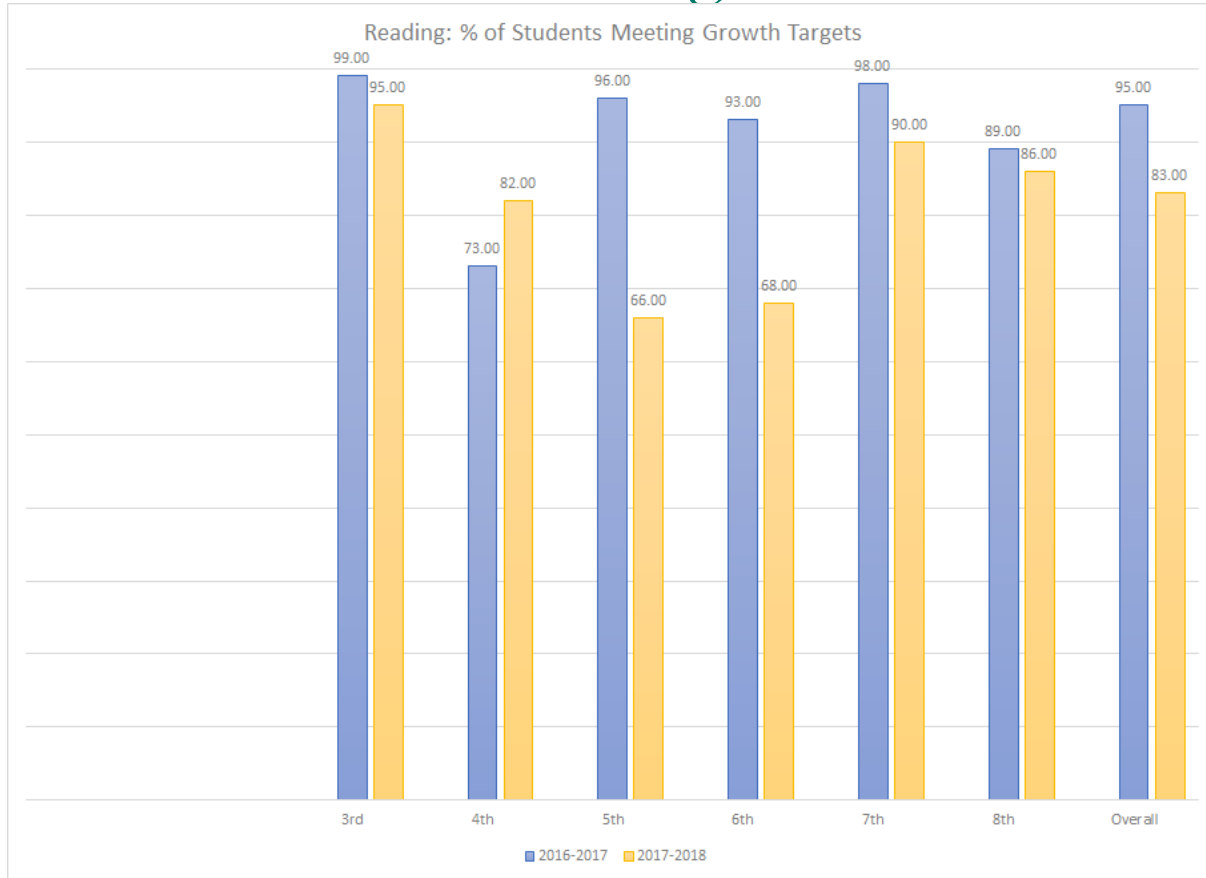
SQRP Over Time at Haines

Metric		SY15	SY16	SY17	SY18	2018-2019 CIWP Goal	2019-2020 CIWP Goal	SQRP CUTOFFS				
								1pt	2pts	3pts	4pts	5pts
Atd Rate	Average Daily Attendance Rate	98.2	98.3	98.5	98.5	96	96	<92	92	94	95	96
MSMV	My Voice, My School 5 Essentials Survey	Not Yet Organized	Partially Organized	Organized	Organized			Not Yet Organized	Partially Organized	Moderately Organized	Organized	Well Organized
DOI	Data Quality Index	98.9	99.7	99.7	99.3			<85	85	90	95	99
ACCESS	% of Students Making Sufficient Annual Progress on ACCESS	53.3	58.2					<25	25	35	45	55

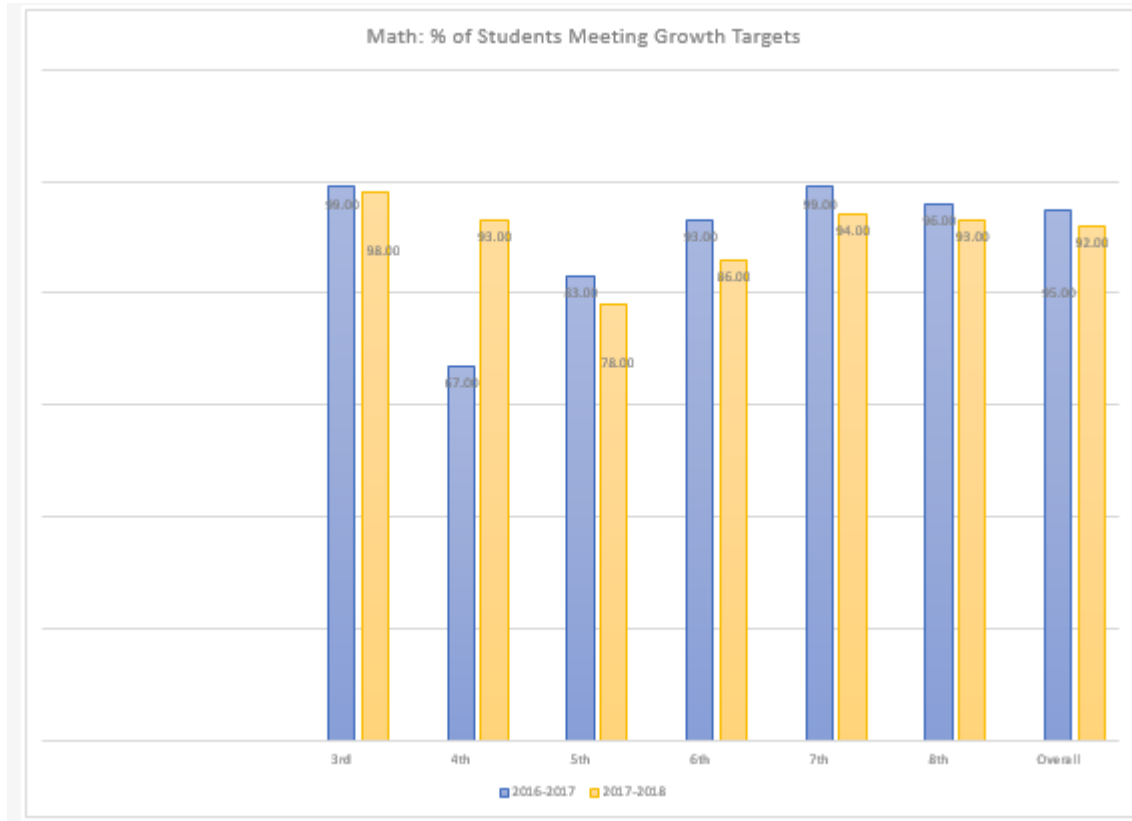
Our Commitment to Equity

		Metric	SY15	SY16	SY17	SY18	2018-2019 CIWP Goal	2019-2020 CIWP Goal	SQRP CUTOFFS				
									1pt	2pts	3pts	4pts	5pts
READING	Growth Percentile	All Students	97	83	94	83	92	90	<10	10	40	70	90
		African-American	91	70	75	70	72	70	<10	10	30	50	70
		Hispanic	<10	10	30	50	70
		English Learners	99	99	99	93	70	70	<10	10	30	50	70
		Diverse Learners	<10	10	30	50	70
MATH	Growth Percentile	All Students	96	94	95	92	92	90	<10	10	40	70	90
		African-American	56	66	66	75	70	70	<10	10	30	50	70
		Hispanic	<10	10	30	50	70
		English Learners	96	99	96	97	70	70	<10	10	30	50	70
		Diverse Learners	<10	10	30	50	70

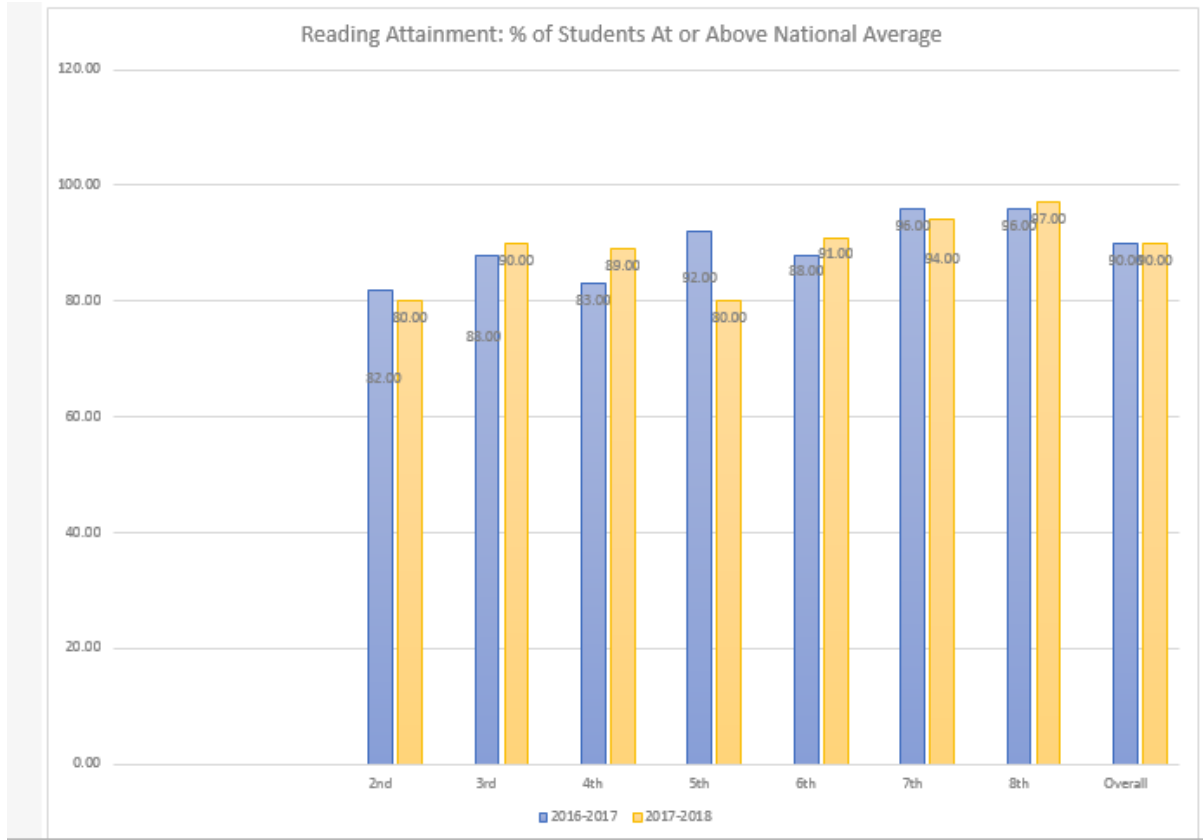
Haines Reading Growth



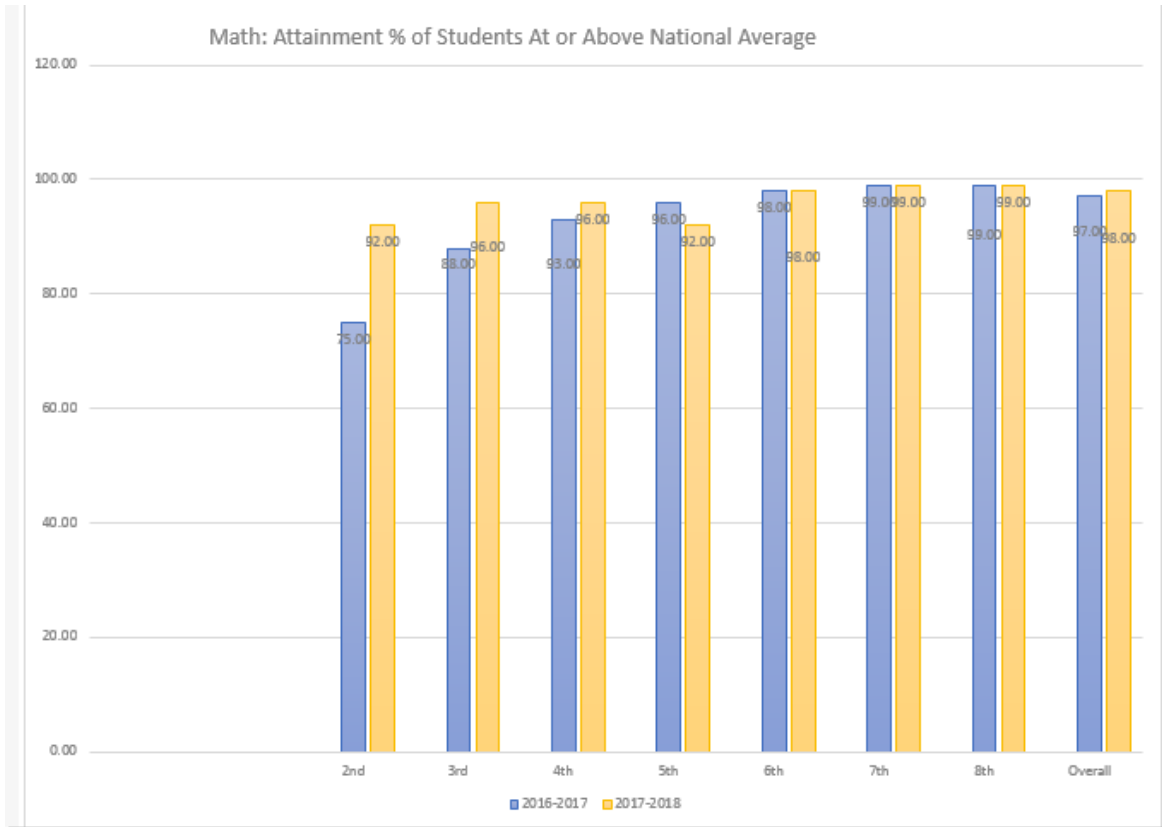
Haines Math Growth



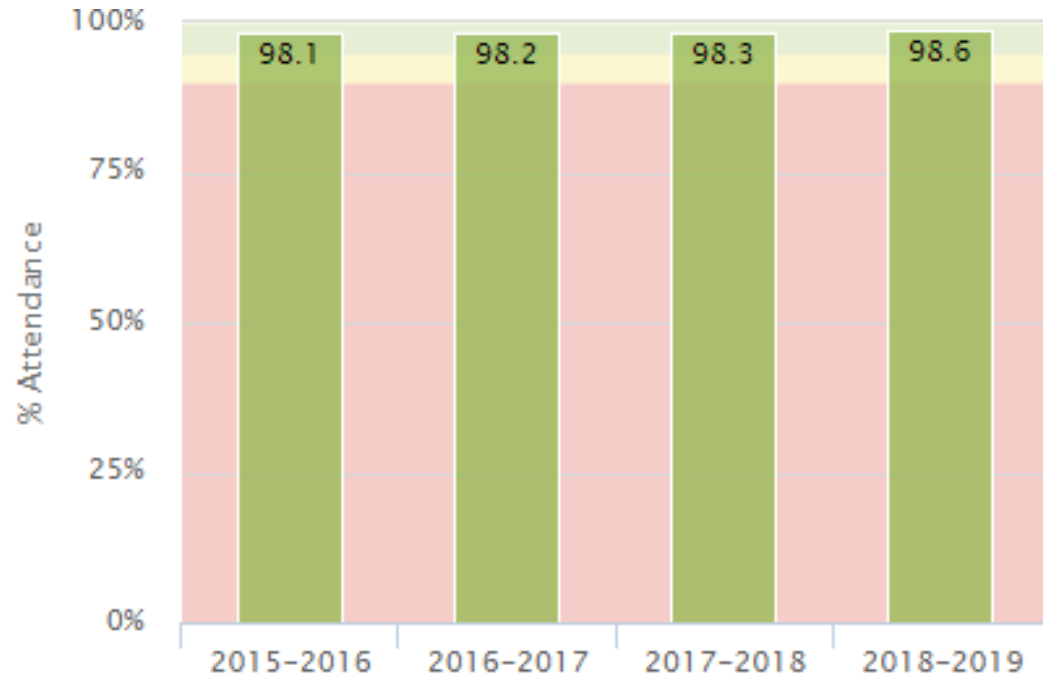
Haines Reading Attainment



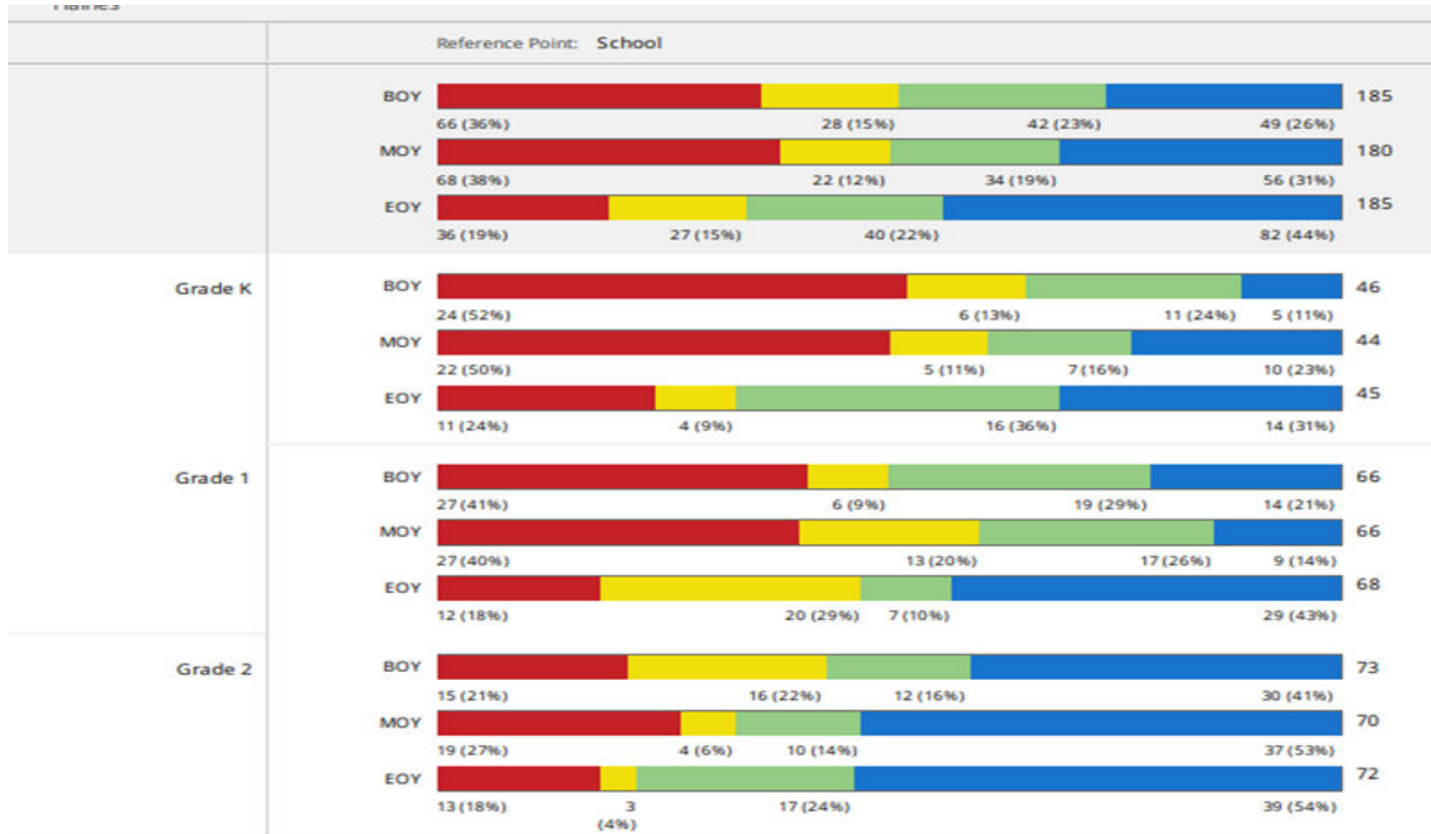
Haines Math Attainment



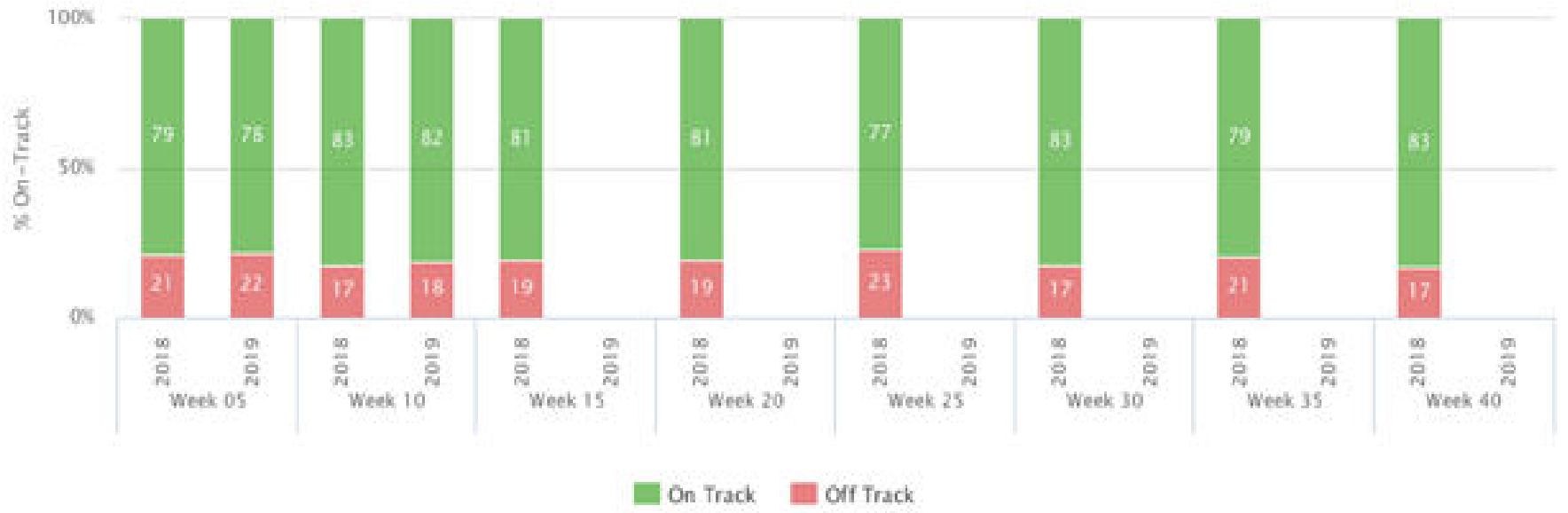
Haines Attendance



Haines K-2 Data from SY 1718



Haines School On Track, by Grade



Haines CIWP Priorities

Relational Trust—focus on adult–student relationships and will focus on staff training on teacher identity and bias so that the school will see better teacher to peer and peer to peer relationships.

Balanced Assessment and Grading –focus on creating and building more common interim assessments so that the teachers will continue to use common protocols to evaluate and improve the quality of assessments.

Haines CIWP Priorities

Restorative Practices—focus on proactive, instructive and restorative behavioral system in response to incidents of misbehaviors so that the school will have consistent practices that will support positive relationships with student-adult relationships

Instruction— focus on engaging students in learning so that the students will build confidence and ownership of their learning and have an increase in the percentage of students mastering targeted concepts and skills in reading and math

We need parents to reach our goal!

- Read all monthly Haines Herald and review monthly calendar
- Make sure you are connected to SeeSaw (Kdg) and Class Dojo (1-5th)
- Attend monthly LSC and PAC meetings
- Check your child's grade on Parent Portal weekly
- Volunteer in the classroom
- Have an open communication with ALL teachers
- Visit the school's website- www.haines.cps.edu
- Follow us on Facebook @ HainesCPS
Instagram and Twitter@ **Haines_CPS** and @ **jchainesart**

We need parents to reach our goal!

-Make sure ALL students all at school EVERYDAY and ON TIME at 7:45AM

-CPS states that every child should be in school every day so that: they are a part of our school family, they learn about new things that help them get ready for their future , they understand how to work with others, and they understand the IMPORTANCE of school. *

-Research shows students who are tardy miss out on activities designed to build connections with their peers, potentially impacting their social interactions and creating a greater sense of alienation from their classmates. **

We need parents to reach our goal!

-Students with 9 or more unexcused absences (5% or more of days enrolled) = CHRONIC TRUANT

-Students with 18 or more excused or unexcused absences (10% or more of days enrolled) = CHRONIC ABSENTEE

*https://cps.edu/AttendanceAndTruancy/Documents/ParentsAttendanceOverview_English.pdf

**<https://www.teachermagazine.com.au/articles/the-effect-of-student-tardiness-on-learning>

We need

YOU!

